

VERSIONS OF THIS PIECE  
ARE ALSO AVAILABLE FOR  
MIXED VOICES (FAM-1047-01),  
AND MEN'S VOICES (FAM-1047-03)

for MUSE, Cincinnati's Women's Choir  
Dr. Catherine Roma, director

# Shir L'Shalom

for soprano duet, SSAA chorus, guitar or piano accompaniment

Ya'akov Rotblit

Yair Rozenblum  
arr. J. David Moore

**Gently Rocking** (♩=96) *mp*

Sop duet

T'nu la - she - mesh la - a - lot la  
Mi a - sher ka - va ne - ro u -

**Gently Rocking** (♩=96)  
Dm Gm

5  
bo - ker le - ha - ir Ha - za - kah she - bat - fil - lot o -  
ve - a - far nit - man Be - chi - mar lo ya - i - ro lo

C F Dm Gm

9  
1. ta - nu lo tach - zir. 2. yach - zi - ro le - chan.

1. A Dm 2. A Dm

13  
Ish o - ta - nu lo ya - shiv mi - bor tach - tit a - fel Kan lo ya - i - lu

C7 F C7 F A

17

*unis.*

Lo sim - chat ha - nit - za - chon\_ ve - lo shi - rei ha - lel. Al ken rak

S

*mf*

Al ken rak

A

*mf*

Al ken rak

Dm

Gm

A

Dm

FOR PERUSAL ONLY  
FRESH AYRE MUSIC

21

*piúf*

shi - ru shir l' - sha-lom al til - cha - shu t'fil - la Mu - tav ta -

S

*piúf*

shi - ru shir l' - sha-lom al til - cha - shu t'fil - la Mu - tav ta -

A

*piúf*

shi - ru shir l' - sha-lom al til - cha - shu t'fil - la Mu - tav ta -

Bb

Am

Gm

Dm

25

*mf*  
 shi - ru shir l' - sha-lom bi - tse - a - ka g'do - la.

S *mf*  
 shi - ru shir l' - sha-lom bi - tse - a - ka g'do - la.

A *mf*  
 shi - ru shir l' - sha-lom bi - tse - a - ka g'do - la.

Bb Am Gm Asus A

30

*mp*  
 T'nu la she - mesh la cha - dor mi - ba - ad la pra - chim

descant

S *p*  
 Shi - ru shir l' - sha-lom, shi - ru shir l' - sha-lom,

A *p*  
 Shi - ru shir l' - sha-lom, shi - ru shir l' - sha-lom,

Dm Gm C Dm



34

Al ta - bi - tu le - a - chor\_ ha - ni - chu la - hol - chim.\_\_\_\_

S shi - ru shir l' - sha - lom, shi - ru shir l' - sha - lom.

A shi - ru shir l' - sha - lom, shi - ru shir l' - sha - lom.

Dm Gm E<sup>o</sup> Dm Gmin<sup>6</sup>



38

*mp*

Su ey - na - yim be - tik - vah\_ la de rech ka - va - not\_\_\_\_\_

descant

*mp*

Ah

*p*

S Shi - ru shir l' - sha - lom, shi - ru shir l' - sha - lom,

*p*

A Shi - ru shir l' - sha - lom, shi - ru shir l' - sha - lom,

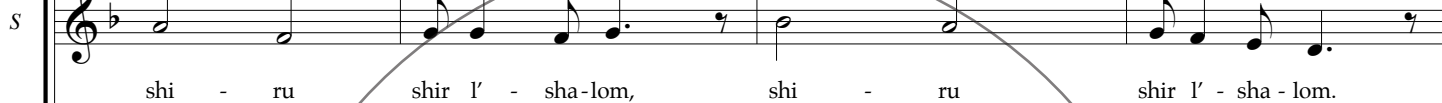
Dm Gm C Dm

\* - grace notes on the beat

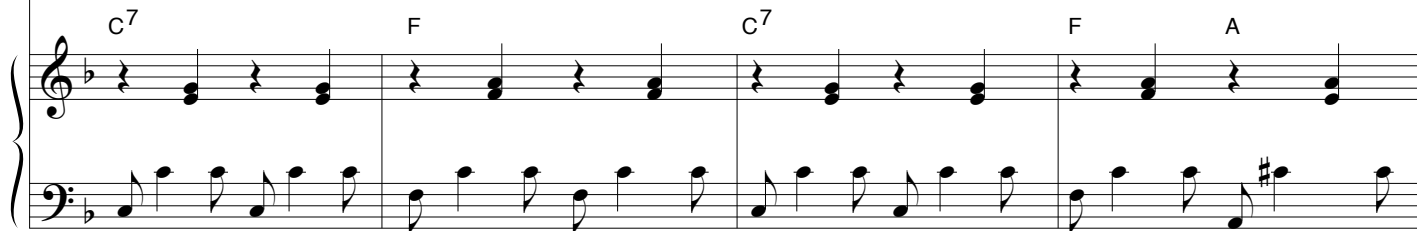
42



descant



46



50

*mf* *piúf*

Al ken rak shi - ru

S U - ve - chol ha ki - ka - rot ha - vi - u l' - sha - lom. Al ken rak shi - ru

A U - ve - chol ha ki - ka - rot ha - vi - u l' - sha - lom. Al ken rak shi - ru

Dm Gm A Dm Bb

FOR PERUSAL ONLY  
FRESH AIR MUSIC

55

shir l' - sha - lom al til - cha - shu t'fil - la Mu - tav ta - shi - ru

S shir l' - sha - lom al til - cha - shu t'fil - la Mu - tav ta - shi - ru

A shir l' - sha - lom al til - cha - shu t'fil - la Mu - tav ta - shi - ru

Am Gm Dm Bb

59

*mf*

shir l' - sha-lom bi - tse - a - ka g'do - la. Al ken rak

S  
shir l' - sha-lom bi - tse - a - ka g'do - la.

A  
shir l' - sha-lom bi - tse - a - ka g'do - la.

Am Gm Asus A Dm

63

shi - - - ru shir l' sha - lom al til - cha - shu t'fil - la

S

A

Bb Am Gm

66

Mu - tav ta - shi - ru shir l' - sha-lom bi - tse - a - ka g'do -

S

A

*mp*

bi -

Dm Bb Am Gm

70

la. Ah

S

A

*mp* *p*

bi - tse - a - ka g'do - la.

tse - a - ka g'do - la. Ah

Asus A Dm